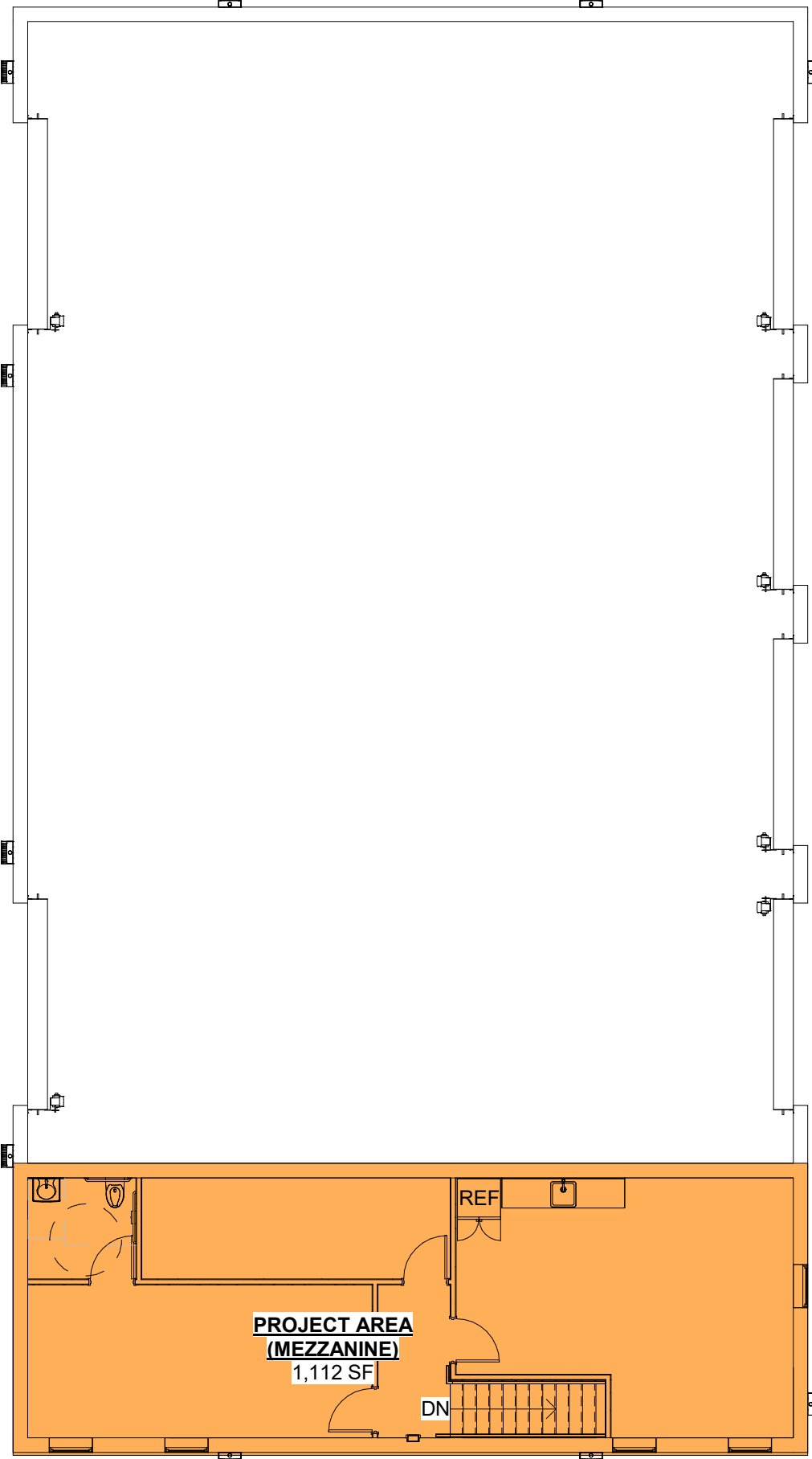
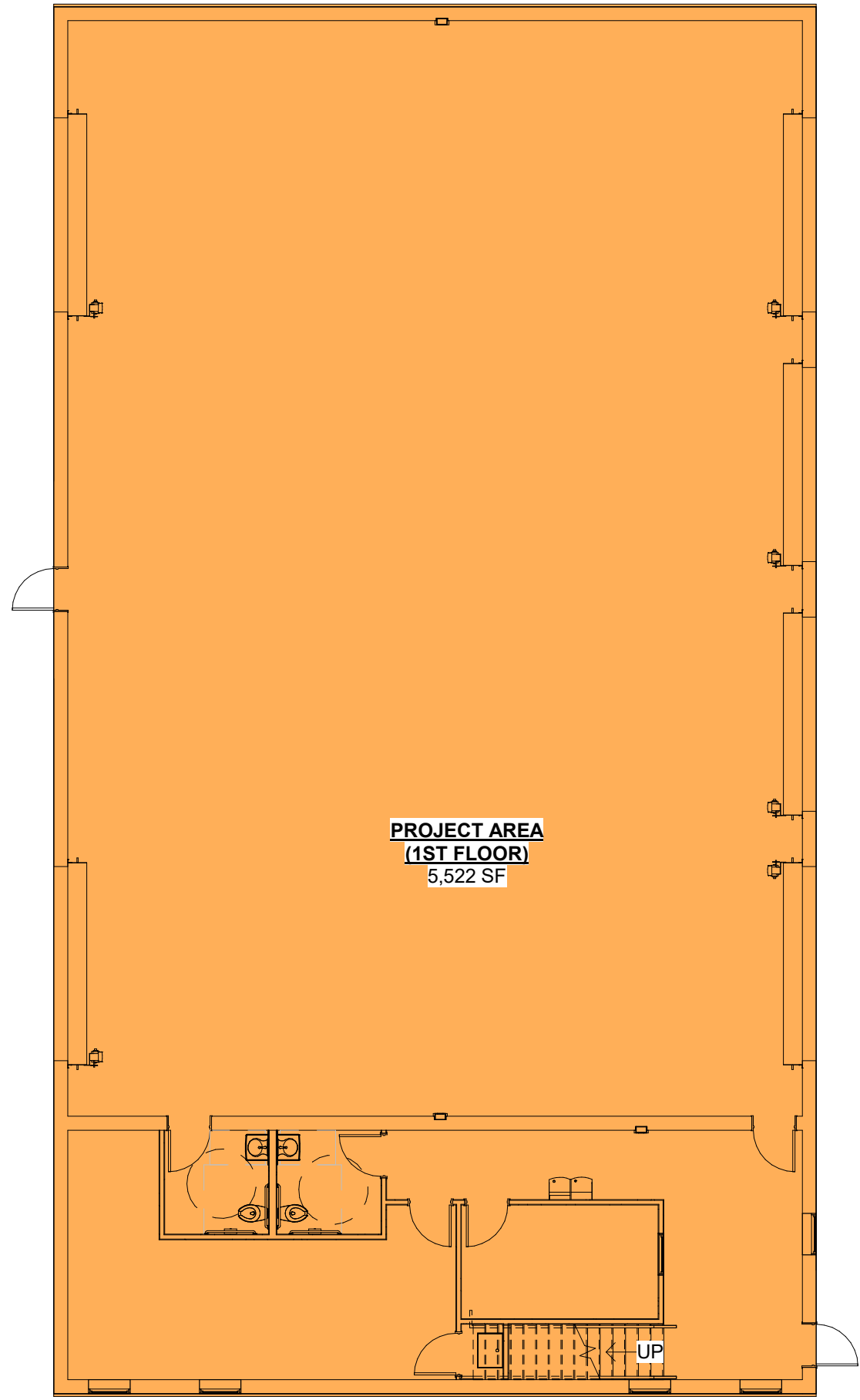
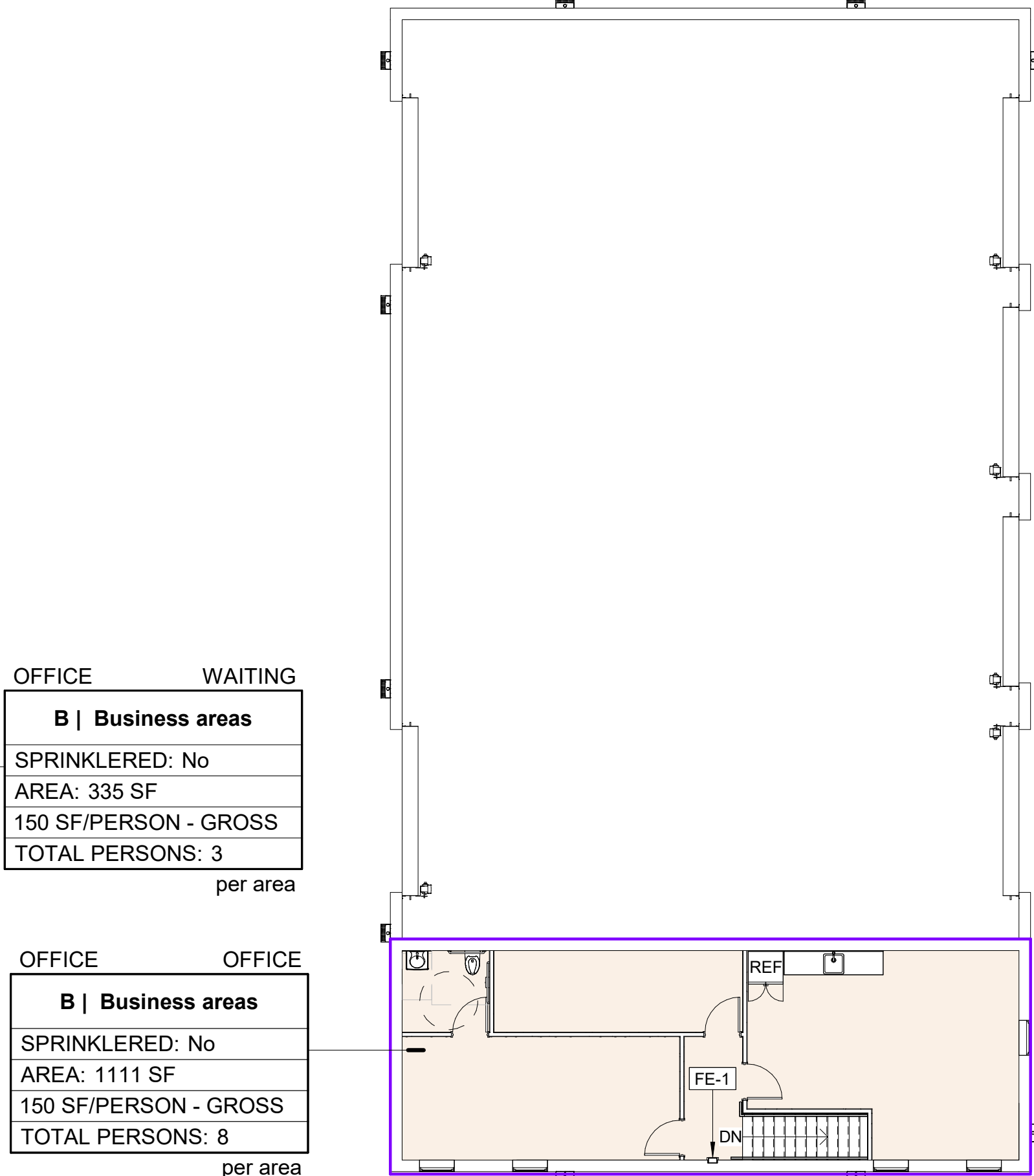
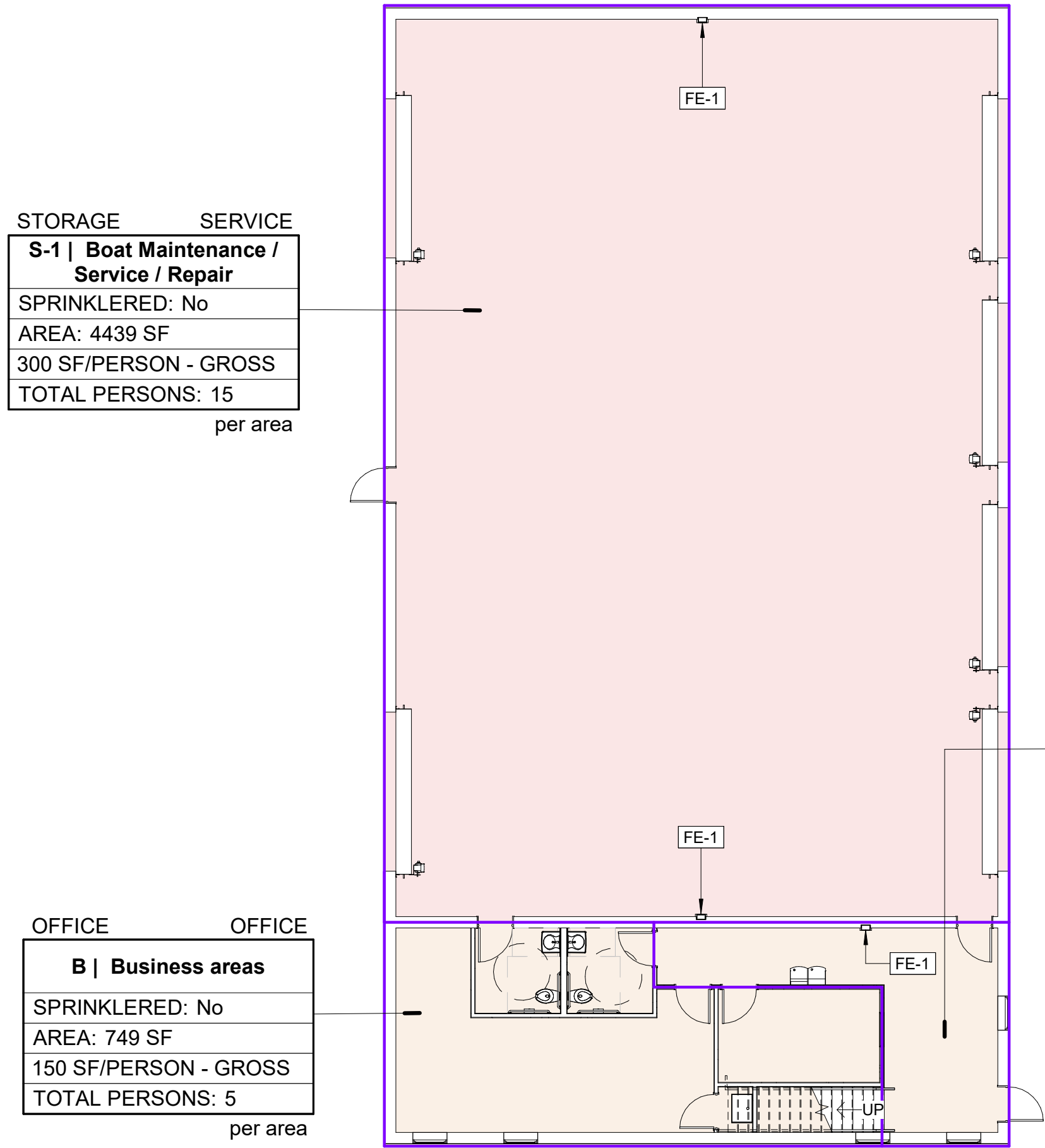


Autodesk Docs/Hodge Marine/24-057/Hodge Marine\_205.rvt  
7/1/2025 9:48:42 AM



1 FIRST FLOOR - PROJECT AREA  
3/32" = 1'-0"

2 MEZZANINE FLOOR - PROJECT AREA  
3/32" = 1'-0"



4 FIRST FLOOR - OCCUPANCY PLAN  
3/32" = 1'-0"

3 MEZZANINE FLOOR - OCCUPANCY PLAN  
3/32" = 1'-0"

## OCCUPANCY PLAN LEGEND

|                    |  |
|--------------------|--|
|                    | FIRE EXTINGUISHER - SEE FIRE EXTINGUISHER SCHEDULE |
|                    | FIRE RATED DOOR                                    |
|                    | 1 HR FIRE RATED                                    |
|                    | 2 HR FIRE RATED                                    |
|                    | 3 HR FIRE RATED                                    |
|                    | 4 HR FIRE RATED                                    |
| AREA NAME          | 101  |
| R-1   OCCUPANCY    | AREA NAME / NUMBER                                 |
| SPRINKLERED: YES   | AREA FUNCTION & OCCUPANCY KEY                      |
| AREA: 1500 SF      | MANUAL: SPRINKLERED INDICATOR                      |
| 100/PERSON - GROSS | AREA SF  |
| TOTAL PERSONS: 10  | OCCUPANT LOAD FACTOR                               |
| per area           | OCCUPANT COUNT                                     |

## CODE COMPLIANCE DATA:

|  |   |                                      |           |
|--|---|--------------------------------------|-----------|
| <b>01. PROJECT SCOPE:</b>  |   |                                      |           |
| THIS PROJECT INVOLVES THE SITE REDEVELOPMENT AND CONSTRUCTION OF A NEW 6,634 SF BOAT MAINTENANCE BUILDING.   |   |                                      |           |
| <b>02. APPLICABLE CODES:</b>   |   |                                      |           |
| FLORIDA BUILDING CODE (FBC) - 8TH EDITION (2023)   |   |                                      |           |
| <ul style="list-style-type: none"><li>• (B) BUILDING</li><li>• (A) ACCESSIBILITY</li><li>• (EC) ENERGY CONSERVATION</li><li>• (M) MECHANICAL</li><li>• (P) PLUMBING</li><li>• (EB) EXISTING BUILDING</li></ul> |   |                                      |           |
| FLORIDA FIRE PREVENTION CODE (FFPC) - 8TH EDITION  |   |                                      |           |
| <ul style="list-style-type: none"><li>• NFPA 1 - FIRE CODE 2018 EDITION</li><li>• NFPA 101 - LIFE SAFETY CODE 2018 EDITION</li></ul>   |   |                                      |           |
| <b>03. USE AND OCCUPANCY CLASSIFICATION:</b>   |   |                                      |           |
| STORAGE:   | GROUP S1 // MODERATE-HAZARD STORAGE (DRY BOAT STORAGE-INDOOR) | FBC-B: <u>SECTION 311.2</u>          |           |
| STORAGE  | FFPC:   | <u>SECTION 6.1.13, SECTION 20.15</u> |           |
| NFPA 101:  |   | <u>CHAPTER 42</u>                    |           |
| <b>04. CONSTRUCTION CLASSIFICATION:</b>  |   |                                      |           |
| TYPE II-B  | FBC-B:  | CHAPTER 6, TABLE 601                 |           |
| TYPE II-B  | FFPC:   | SECTION 12.1                         |           |
| NFPA 220:  |   | TABLE 4.1.1                          |           |
| <b>05. OCCUPANT LOAD:</b>  |   |                                      |           |
| FUNCTION OF SPACE  | LOAD FACTOR   | AREA                                 | OCC. LOAD |
| Boat Maintenance / Service / Repair  | 300 SF  | GROSS                                | 4439 SF   |
| Business areas   | 150 SF  | GROSS                                | 2195 SF   |
| TOTAL OCCUPANT LOAD:   |   | 6634 SF                              | 31        |
| <b>06. MEANS OF EGRESS SIZING:</b>   |   |                                      |           |
| OTHER MEANS:   | 0.2"/PERSON   | SECTION 1005.3.2                     |           |
| FBC-B:   |   | TABLE 7.3.3.1                        |           |
| NFPA 101:  |   | TABLE 7.3.3.1                        |           |
|  | 31 PERSONS X 0.2" = 6.2" MINIMUM                              |                                      |           |
|  | 64" PROVIDED  |                                      |           |
| <b>07. COMMON PATH OF TRAVEL:</b>  |   |                                      |           |
| OCCUPANCY:   | 75' MAXIMUM   | TABLE 1006.2.1                       |           |
| (STORAGE S-1)  | FBC-B:  | TABLE 1006.2.1                       |           |
|  | NFPA 101:   | TABLE A.7.6                          |           |
|  | 10'-9" PROVIDED   |                                      |           |
| NOTE: MAXIMUM COMMON PATH OF TRAVEL TAKEN FROM LIFE SAFETY PLAN  |   |                                      |           |
| <b>08. TRAVEL DISTANCE:</b>  |   |                                      |           |
| OCCUPANCY:   | 200' MAXIMUM  | TABLE 1017.2                         |           |
| (STORAGE S-1)  | FBC-B:  | TABLE 1017.2                         |           |
|  | NFPA 101:   | TABLE A.7.6                          |           |
|  | 110'-0" PROVIDED  |                                      |           |
| NOTE: MAXIMUM TRAVEL DISTANCE TAKEN FROM LIFE SAFETY PLAN  |   |                                      |           |
| <b>09. DOOR SIZE:</b>  |   |                                      |           |
|  | 32" MINIMUM   | SECTION 1010.1.1                     |           |
|  | FBC-B:  | SECTION 1010.1.1                     |           |
|  | NFPA 101:   | SECTION 7.2.1.2.3.2                  |           |
|  | 32" PROVIDED  |                                      |           |
| <b>10. STAIRWAYS:</b>  |   |                                      |           |
|  | 44" MINIMUM WIDTH   | SECTION 1011.2                       |           |
|  | FBC-B:  | SECTION 1011.2                       |           |
|  | NFPA 101:   | SECTION 7.2.2.2.1.2(B)               |           |
|  | 48" PROVIDED  |                                      |           |
| NOTE: MAXIMUM TRAVEL DISTANCE TAKEN FROM LIFE SAFETY PLAN  |   |                                      |           |
| <b>11. HAZARD CLASSIFICATION:</b>  |   |                                      |           |
| STORAGE:   | ORDINARY  | SECTION 6.2.2.3                      |           |
| NFPA 101:  |   |                                      |           |
| <b>12. DEFERRED SUBMITTALS:</b>  |   |                                      |           |
|  | TBD   | FBC-B: 107.3.4.1                     |           |
| <b>13. PLUMBING FIXTURE REQUIREMENTS:</b>  |   |                                      |           |
| IBC-B TABLE: 2902.1  |   |                                      |           |
| <b>STORAGE S-1 OCCUPANCY</b>   |   |                                      |           |
| OCCUPANT LOAD: 31 PERSONS  |   |                                      |           |
| WC / U   | 1/100   |                                      |           |
| REQ'D:   | 1   |                                      |           |
| PROVIDED:  | 3   |                                      |           |
| LAV  | 1/100   |                                      |           |
| REQ'D:   | 1   |                                      |           |
| PROVIDED:  | 3   |                                      |           |
| DE   | 1/1000  |                                      |           |
|  | 1 REQ'D   |                                      |           |
|  | 1 PROVIDED  |                                      |           |
| <b>14. STAIRWAY WIDTH:</b>   |   |                                      |           |
|  | 44" MINIMUM   | SECTION 1011.2                       |           |
|  | FBC-B:  | SECTION 1011.2                       |           |
|  | NFPA 101:   | SECTION 7.2.2.2.1.2(B)               |           |
|  | 48" PROVIDED  |                                      |           |
| NOTE: MAXIMUM TRAVEL DISTANCE TAKEN FROM LIFE SAFETY PLAN  |   |                                      |           |
| <b>15. STAIRWAY HEADROOM:</b>  |   |                                      |           |
|  | 6'-8" MINIMUM   | SECTION 1011.2                       |           |
|  | FBC-B:  | SECTION 1011.2                       |           |
|  | NFPA 101:   | SECTION 7.2.2.2.1.2(B)               |           |
|  | 6'-8" PROVIDED  |                                      |           |
| NOTE: MAXIMUM TRAVEL DISTANCE TAKEN FROM LIFE SAFETY PLAN  |   |                                      |           |
| <b>16. STAIRWAY HANDRAILS:</b>   |   |                                      |           |
|  | 42" MINIMUM   | SECTION 1011.2                       |           |
|  | FBC-B:  | SECTION 1011.2                       |           |
|  | NFPA 101:   | SECTION 7.2.2.2.1.2(B)               |           |
|  | 42" PROVIDED  |                                      |           |
| NOTE: MAXIMUM TRAVEL DISTANCE TAKEN FROM LIFE SAFETY PLAN  |   |                                      |           |
| <b>17. STAIRWAY EMERGENCY ILLUMINATION:</b>  |   |                                      |           |
|  | 1 FOOT CANDLE   | SECTION 1011.2                       |           |
|  | FBC-B:  | SECTION 1011.2                       |           |
|  | NFPA 101:   | SECTION 7.2.2.2.1.2(B)               |           |
|  | 1 FOOT CANDLE PROVIDED  |                                      |           |
| NOTE: MAXIMUM TRAVEL DISTANCE TAKEN FROM LIFE SAFETY PLAN  |   |                                      |           |
| <b>18. STAIRWAY EGRESS SIGNAGE:</b>  |   |                                      |           |
|  | 44" MINIMUM   | SECTION 1011.2                       |           |
|  | FBC-B:  | SECTION 1011.2                       |           |
|  | NFPA 101:   | SECTION 7.2.2.2.1.2(B)               |           |
|  | 44" PROVIDED  |                                      |           |
| NOTE: MAXIMUM TRAVEL DISTANCE TAKEN FROM LIFE SAFETY PLAN  |   |                                      |           |
| <b>19. STAIRWAY EGRESS DOOR:</b>   |   |                                      |           |
|  | 32" MINIMUM   | SECTION 1010.1.1                     |           |
|  | FBC-B:  | SECTION 1010.1.1                     |           |
|  | NFPA 101:   | SECTION 7.2.1.2.3.2                  |           |
|  | 32" PROVIDED  |                                      |           |
| NOTE: MAXIMUM TRAVEL DISTANCE TAKEN FROM LIFE SAFETY PLAN  |   |                                      |           |
| <b>20. STAIRWAY EGRESS DOOR SCHEDULING:</b>  |   |                                      |           |
|  | 32" MINIMUM   | SECTION 1010.1.1                     |           |
|  | FBC-B:  | SECTION 1010.1.1                     |           |
|  | NFPA 101:   | SECTION 7.2.1.2.3.2                  |           |
|  | 32" PROVIDED  |                                      |           |
| NOTE: MAXIMUM TRAVEL DISTANCE TAKEN FROM LIFE SAFETY PLAN  |   |                                      |           |
| <b>21. STAIRWAY EGRESS DOOR SCHEDULING:</b>  |   |                                      |           |
|  | 32" MINIMUM   | SECTION 1010.1.1                     |           |
|  | FBC-B:  | SECTION 1010.1.1                     |           |
|  | NFPA 101:   | SECTION 7.2.1.2.3.2                  |           |
|  | 32" PROVIDED  |                                      |           |
| NOTE: MAXIMUM TRAVEL DISTANCE TAKEN FROM LIFE SAFETY PLAN  |   |                                      |           |
| <b>22. STAIRWAY EGRESS DOOR SCHEDULING:</b>  |   |                                      |           |
|  | 32" MINIMUM   | SECTION 1010.1.1                     |           |
|  | FBC-B:  | SECTION 1010.1.1                     |           |
|  | NFPA 101:   | SECTION 7.2.1.2.3.2                  |           |
|  | 32" PROVIDED  |                                      |           |
| NOTE: MAXIMUM TRAVEL DISTANCE TAKEN FROM LIFE SAFETY PLAN  |   |                                      |           |
| <b>23. STAIRWAY EGRESS DOOR SCHEDULING:</b>  |   |                                      |           |
|  | 32" MINIMUM   | SECTION 1010.1.1                     |           |
|  | FBC-B:  | SECTION 1010.1.1                     |           |
|  | NFPA 101:   | SECTION 7.2.1.2.3.2                  |           |
|  | 32" PROVIDED  |                                      |           |
| NOTE: MAXIMUM TRAVEL DISTANCE TAKEN FROM LIFE SAFETY PLAN  |   |                                      |           |
| <b>24. STAIRWAY EGRESS DOOR SCHEDULING:</b>  |   |                                      |           |
|  | 32" MINIMUM   | SECTION 1010.1.1                     |           |
|  | FBC-B:  | SECTION 1010.1.1                     |           |
|  | NFPA 101:   | SECTION 7.2.1.2.3.2                  |           |
|  | 32" PROVIDED  |                                      |           |
| NOTE: MAXIMUM TRAVEL DISTANCE TAKEN FROM LIFE SAFETY PLAN  |   |                                      |           |
| <b>25. STAIRWAY EGRESS DOOR SCHEDULING:</b>  |   |                                      |           |
|  | 32" MINIMUM   | SECTION 1010.1.1                     |           |
|  | FBC-B:  | SECTION 1010.1.1                     |           |
|  | NFPA 101:   | SECTION 7.2.1.2.3.2                  |           |
|  | 32" PROVIDED  |                                      |           |
| NOTE: MAXIMUM TRAVEL DISTANCE TAKEN FROM LIFE SAFETY PLAN  |   |                                      |           |
| <b>26. STAIRWAY EGRESS DOOR SCHEDULING:</b>  |   |                                      |           |
|  | 32" MINIMUM   | SECTION 1010.1.1                     |           |
|  | FBC-B:  | SECTION 1010.1.1                     |           |
|  | NFPA 101:   | SECTION 7.2.1.2.3.2                  |           |
|  | 32" PROVIDED  |                                      |           |
| NOTE: MAXIMUM TRAVEL DISTANCE TAKEN FROM LIFE SAFETY PLAN  |   |                                      |           |
| <b>27. STAIRWAY EGRESS DOOR SCHEDULING:</b>  |   |                                      |           |
|  | 32" MINIMUM   | SECTION 1010.1.1                     |           |
|  | FBC-B:  | SECTION 1010.1.1                     |           |
|  | NFPA 101:   | SECTION 7.2.1.2.3.2                  |           |
|  | 32" PROVIDED  |                                      |           |
| NOTE: MAXIMUM TRAVEL DISTANCE TAKEN FROM LIFE SAFETY PLAN  |   |                                      |           |
| <b>28. STAIRWAY EGRESS DOOR SCHEDULING:</b>  |   |                                      |           |
|  | 32" MINIMUM   | SECTION 1010.1.1                     |           |
|  | FBC-B:  | SECTION 1010.1.1                     |           |
|  | NFPA 101:   | SECTION 7.2.1.2.3.2                  |           |
|  | 32" PROVIDED  |                                      |           |
| NOTE: MAXIMUM TRAVEL DISTANCE TAKEN FROM LIFE SAFETY PLAN  |   |                                      |           |
| <b>29. STAIRWAY EGRESS DOOR SCHEDULING:</b>  |   |                                      |           |
|  | 32" MINIMUM   | SECTION 1010.1.1                     |           |
|  | FBC-B:  | SECTION 1010.1.1                     |           |
|  | NFPA 101:   | SECTION 7.2.1.2.3.2                  |           |
|  | 32" PROVIDED  |                                      |           |
| NOTE: MAXIMUM TRAVEL DISTANCE TAKEN FROM LIFE SAFETY PLAN  |   |                                      |           |
| <b>30. STAIRWAY EGRESS DOOR SCHEDULING:</b>  |   |                                      |           |
|  | 32" MINIMUM   | SECTION 1010.1.1                     |           |
|  | FBC-B:  | SECTION 1010.1.1                     |           |
|  | NFPA 101:   | SECTION 7.2.1.2.3.2                  |           |
|  | 32" PROVIDED  |                                      |           |
| NOTE: MAXIMUM TRAVEL DISTANCE TAKEN FROM LIFE SAFETY PLAN  |   |                                      |           |
| <b>31. STAIRWAY EGRESS DOOR SCHEDULING:</b>  |   |                                      |           |
|  | 32" MINIMUM   | SECTION 1010.1.1                     |           |
|  | FBC-B:  | SECTION 1010.1.1                     |           |
|  | NFPA 101:   | SECTION 7.2.1.2.3.2                  |           |
|  | 32" PROVIDED  |                                      |           |
| NOTE: MAXIMUM TRAVEL DISTANCE TAKEN FROM LIFE SAFETY PLAN  |   |                                      |           |
| <b>32. STAIRWAY EGRESS DOOR SCHEDULING:</b>  |   |                                      |           |
|  | 32" MINIMUM   | SECTION 1010.1.1                     |           |
|  | FBC-B:  | SECTION 1010.1.1                     |           |
|  | NFPA 101:   | SECTION 7.2.1.2.3.2                  |           |
|  | 32" PROVIDED  |                                      |           |
| NOTE: MAXIMUM TRAVEL DISTANCE TAKEN FROM LIFE SAFETY PLAN  |   |                                      |           |
| <b>33. STAIRWAY EGRESS DOOR SCHEDULING:</b>  |   |                                      |           |
|  | 32" MINIMUM   | SECTION 1010.1.1                     |           |
|  | FBC-B:  | SECTION 1010.1.1                     |           |
|  | NFPA 101:   | SECTION 7.2.1.2.3.2                  |           |
|  | 32" PROVIDED  |                                      |           |
| NOTE: MAXIMUM TRAVEL DISTANCE TAKEN FROM LIFE SAFETY PLAN  |   |                                      |           |
| <b>34. STAIRWAY EGRESS DOOR SCHEDULING:</b>  |   |                                      |           |
|  | 32" MINIMUM   | SECTION 1010.1.1                     |           |
|  | FBC-B:  | SECTION 1010.1.1                     |           |
|  | NFPA 101:   | SECTION 7.2.1.2.3.2                  |           |
|  | 32" PROVIDED  |                                      |           |
| NOTE: MAXIMUM TRAVEL DISTANCE TAKEN FROM LIFE SAFETY PLAN  |   |                                      |           |
| <b>35. STAIRWAY EGRESS DOOR SCHEDULING:</b>  |   |                                      |           |
|  | 32" MINIMUM   | SECTION 1010.1.1                     |           |
|  | FBC-B:  | SECTION 1010.1.1                     |           |
|  | NFPA 101:   | SECTION 7.2.1.2.3.2                  |           |
|  | 32" PROVIDED  |                                      |           |
| NOTE: MAXIMUM TRAVEL DISTANCE TAKEN FROM LIFE SAFETY PLAN  |   |                                      |           |
| <b>36. STAIRWAY EGRESS DOOR SCHEDULING:</b>  |   |                                      |           |
|  | 32" MINIMUM   | SECTION 1010.1.1                     |           |
|  | FBC-B:  | SECTION 1010.1.1                     |           |
|  | NFPA 101:   | SECTION 7.2.1.2.3.2                  |           |
|  | 32" PROVIDED  |                                      |           |
| NOTE: MAXIMUM TRAVEL DISTANCE TAKEN FROM LIFE SAFETY PLAN  |   |                                      |           |
| <b>37. STAIRWAY EGRESS DOOR SCHEDULING:</b>  |   |                                      |           |
|  | 32" MINIMUM   | SECTION 1010.1.1                     |           |
|  | FBC-B:  | SECTION 1010.1.1                     |           |
|  | NFPA 101:   | SECTION 7.2.1.2.3.2                  |           |
|  | 32" PROVIDED  |                                      |           |
| NOTE: MAXIMUM TRAVEL DISTANCE TAKEN FROM LIFE SAFETY PLAN  |   |                                      |           |
| <b>38. STAIRWAY EGRESS DOOR SCHEDULING:</b>  |   |                                      |           |
|  | 32" MINIMUM   | SECTION 1010.1.1                     |           |
|  | FBC-B:  | SECTION 1010.1.1                     |           |
|  | NFPA 101:   | SECTION 7.2.1.2.3.2                  |           |
|  | 32" PROVIDED  |                                      |           |
| NOTE: MAXIMUM TRAVEL DISTANCE TAKEN FROM LIFE SAFETY PLAN  |   |                                      |           |
| <b>39. STAIRWAY EGRESS DOOR SCHEDULING:</b>  |   |                                      |           |
|  | 32" MINIMUM   | SECTION 1010.1.1                     |           |
|  | FBC-B:  | SECTION 1010.1.1                     |           |
|  | NFPA 101:   | SECTION 7.2.1.2.3.2                  |           |
|  | 32" PROVIDED  |                                      |           |
| NOTE: MAXIMUM TRAVEL DISTANCE TAKEN FROM LIFE SAFETY PLAN  |   |                                      |           |
| <b>40. STAIRWAY EGRESS DOOR SCHEDULING:</b>  |   |                                      |           |
|  | 32" MINIMUM   | SECTION 1010.1.1                     |           |
|  | FBC-B:  | SECTION 1010.1.1                     |           |
|  | NFPA 101:   | SECTION 7.2.1.2.3.2                  |           |
|  | 32" PROVIDED  |                                      |           |
| NOTE: MAXIMUM TRAVEL DISTANCE TAKEN FROM LIFE SAFETY PLAN  |   |                                      |           |
| <b>41. STAIRWAY EGRESS DOOR SCHEDULING:</b>  |   |                                      |           |
|  | 32" MINIMUM   | SECTION 1010.1.1                     |           |
|  | FBC-B:  | SECTION 1010.1.1                     |           |
|  | NFPA 101:   | SECTION 7.2.1.2.3.2                  |           |
|  | 32" PROVIDED  |                                      |           |
| NOTE: MAXIMUM TRAVEL DISTANCE TAKEN FROM LIFE SAFETY PLAN  |   |                                      |           |
| <b>42. STAIRWAY EGRESS DOOR SCHEDULING:</b>  |   |                                      |           |
|  | 32" MINIMUM   | SECTION 1010.1.1                     |           |
|  | FBC-B:  | SECTION 1010.1.1                     |           |
|  | NFPA 101:   | SECTION 7.2.1.2.3.2                  |           |
|  | 32" PROVIDED  |                                      |           |
| NOTE: MAXIMUM TRAVEL DISTANCE TAKEN FROM LIFE SAFETY PLAN  |   |                                      |           |
| <b>43. STAIRWAY EGRESS DOOR SCHEDULING:</b>  |   |                                      |           |
|  | 32" MINIMUM   | SECTION 1010.1.1                     |           |
|  | FBC-B:  | SECTION 1010.1.1                     |           |
|  | NFPA 101:   | SECTION 7.2.1.2.3.2                  |           |
|  | 32" PROVIDED  |                                      |           |
| NOTE: MAXIMUM TRAVEL DISTANCE TAKEN FROM LIFE SAFETY PLAN  |   |                                      |           |
| <b>44. STAIRWAY EGRESS DOOR SCHEDULING:</b>  |   |                                      |           |
|  | 32" MINIMUM   | SECTION 1010.1.1                     |           |
|  | FBC-B:  | SECTION 1010.1.1                     |           |
|  | NFPA 101:   | SECTION 7.2.1.2.3.2                  |           |
|  | 32" PROVIDED  |                                      |           |
| NOTE: MAXIMUM TRAVEL DISTANCE TAKEN FROM LIFE SAFETY PLAN  |   |                                      |           |
| <b>45. STAIRWAY EGRESS DOOR SCHEDULING:</b>  |   |                                      |           |
|  | 32" MINIMUM   | SECTION 1010.1.1                     |           |
|  | FBC-B:  | SECTION 1010.1.1                     |           |
|  | NFPA 101:   | SECTION 7.2.1.2.3.2                  |           |
|  | 32" PROVIDED  |                                      |           |
| NOTE: MAXIMUM TRAVEL DISTANCE TAKEN FROM LIFE SAFETY PLAN  |   |                                      |           |
| <b>46. STAIRWAY EGRESS DOOR SCHEDULING:</b>  |   |                                      |           |
|  | 32" MINIMUM   | SECTION 1010.1.1                     |           |
|  | FBC-B:  | SECTION 1010.1.1                     |           |
|  | NFPA 101:   | SECTION 7.2.1.2.3.2                  |           |
|  | 32" PROVIDED  |                                      |           |
| NOTE: MAXIMUM TRAVEL DISTANCE TAKEN FROM LIFE SAFETY PLAN  |   |                                      |           |
| <b>47. STAIRWAY EGRESS DOOR SCHEDULING:</b>  |   |                                      |           |
|  | 32" MINIMUM   | SECTION 1010.1.1                     |           |
|  | FBC-B:  | SECTION 1010.1.1                     |           |
|  | NFPA 101:   | SECTION 7.2.1.2.3.2                  |           |
|  | 32" PROVIDED  |                                      |           |
| NOTE: MAXIMUM TRAVEL DISTANCE TAKEN FROM LIFE SAFETY PLAN  |   |                                      |           |
| <b>48. STAIRWAY EGRESS DOOR SCHEDULING:</b>  |   |                                      |           |
|  | 32" MINIMUM   | SECTION 1010.1.1                     |           |
|  | FBC-B:  | SECTION 1010.1.1                     |           |
|  | NFPA 101:   | SECTION 7.2.1.2.3.2                  |           |
|  | 32" PROVIDED  |                                      |           |
| NOTE: MAXIMUM TRAVEL DISTANCE TAKEN FROM LIFE SAFETY PLAN  |   |                                      |           |
| <b>49. STAIRWAY EGRESS DOOR SCHEDULING:</b>  |   |                                      |           |
|  | 32" MINIMUM   | SECTION 1010.1.1                     |           |
|  | FBC-B:  | SECTION 1010.1.1                     |           |
|  | NFPA 101:   | SECTION 7.2.1.2.3.2                  |           |
|  | 32" PROVIDED  |                                      |           |
| NOTE: MAXIMUM TRAVEL DISTANCE TAKEN FROM LIFE SAFETY PLAN  |   |                                      |           |
| <b>50. STAIRWAY EGRESS DOOR SCHEDULING:</b>  |   |                                      |           |
|  | 32" MINIMUM   | SECTION 1010.1.1                     |           |
|  | FBC-B:  | SECTION 1010.1.1                     |           |
|  | NFPA 101:   | SECTION 7.2.1.2.3.2                  |           |
|  | 32" PROVIDED  |                                      |           |
| NOTE: MAXIMUM TRAVEL DISTANCE TAKEN FROM LIFE SAFETY PLAN  |   |                                      |           |
| <b>51. STAIRWAY EGRESS DOOR SCHEDULING:</b>  |   |                                      |           |
|  | 32" MINIMUM   | SECTION 1010.1.1                     |           |
|  | FBC-B:  | SECTION 1010.1.1                     |           |
|  | NFPA 101:   | SECTION 7.2.1.2.3.2                  |           |
|  | 32" PROVIDED  |                                      |           |
| NOTE: MAXIMUM TRAVEL DISTANCE TAKEN FROM LIFE SAFETY PLAN  |   |                                      |           |
| <b>52. STAIRWAY EGRESS DOOR SCHEDULING:</b>  |   |                                      |           |
|  | 32" MINIMUM   | SECTION 1010.1.1                     |           |
|  | FBC-B:  | SECTION 1010.1.1                     |           |
|  | NFPA 101:   | SECTION 7.2.1.2.3.2                  |           |
|  | 32" PROVIDED  |                                      |           |
| NOTE: MAXIMUM TRAVEL DISTANCE TAKEN FROM LIFE SAFETY PLAN  |   |                                      |           |
| <b>53. STAIRWAY EGRESS DOOR SCHEDULING:</b>  |   |                                      |           |
|  | 32" MINIMUM   | SECTION 1010.1.1                     |           |
|  | FBC-B:  | SECTION 1010.1.1                     |           |
|  | NFPA 101:   | SECTION 7.2.1.2.3.2                  |           |
|  | 32" PROVIDED  |                                      |           |
| NOTE: MAXIMUM TRAVEL DISTANCE TAKEN FROM LIFE SAFETY PLAN  |   |                                      |           |
| <b>54. STAIRWAY EGRESS DOOR SCHEDULING:</b>  |   |                                      |           |
|  | 32" MINIMUM   | SECTION 1010.1.1                     |           |
|  | FBC-B:  | SECTION 1010.1.1                     |           |
|  | NFPA 101:   | SECTION 7.2.1.2.3.2                  |           |
|  | 32" PROVIDED  |                                      |           |
| NOTE: MAXIMUM TRAVEL DISTANCE TAKEN FROM LIFE SAFETY PLAN  |   |                                      |           |
| <b>55. STAIRWAY EGRESS DOOR SCHEDULING:</b>  |   |                                      |           |
|  | 32" MINIMUM   | SECTION 1010.1.1                     |           |
|  | FBC-B:  | SECTION 1010.1.1                     |           |
|  | NFPA 101:   | SECTION 7.2.1.2.3.2                  |           |
|  | 32" PROVIDED  |                                      |           |
| NOTE: MAXIMUM TRAVEL DISTANCE TAKEN FROM LIFE SAFETY PLAN  |   |                                      |           |
| <b>56. STAIRWAY EGRESS DOOR SCHEDULING:</b>  |   |                                      |           |
|  | 32" MINIMUM   | SECTION 1010.1.1                     |           |
|  | FBC-B:  | SECTION 1010.1.1                     |           |
|  | NFPA 101:   | SECTION 7.2.1.2.3.2                  |           |
|  | 32" PROVIDED  |                                      |           |
| NOTE: MAXIMUM TRAVEL DISTANCE TAKEN FROM LIFE SAFETY PLAN  |   |                                      |           |
| <b>57. STAIRWAY EGRESS DOOR SCHEDULING:</b>  |   |                                      |           |
|  | 32" MINIMUM   | SECTION 1010.1.1                     |           |
|  | FBC-B:  | SECTION 1010.1.1                     |           |
|  | NFPA 101:   | SECTION 7.2.1.2.3.2                  |           |
|  | 32" PROVIDED  |                                      |           |
| NOTE: MAXIMUM TRAVEL DISTANCE TAKEN FROM LIFE SAFETY PLAN  |   |                                      |           |
| <b>58. STAIRWAY EGRESS DOOR SCHEDULING:</b>  |   |                                      |           |
|  | 32" MINIMUM   | SECTION 1010.1.1                     |           |
|  | FBC-B:  | SECTION 1010.1.1                     |           |
|  | NFPA 101:   | SECTION 7.2.1.2.3.2                  |           |
|  | 32" PROVIDED  |                                      |           |
| NOTE: MAXIMUM TRAVEL DISTANCE TAKEN FROM LIFE SAFETY PLAN  |   |                                      |           |
| <b>59. STAIRWAY EGRESS DOOR SCHEDULING:</b>  |   |                                      |           |
|  | 32" MINIMUM   | SECTION 1010.1.1                     |           |
|  | FBC-B:  | SECTION 1010.1.1                     |           |
|  | NFPA 101:   | SECTION 7.2.1.2.3.2                  |           |
|  | 32" PROVIDED  |                                      |           |
| NOTE: MAXIMUM TRAVEL DISTANCE TAKEN FROM LIFE SAFETY PLAN  |   |                                      |           |
| <b>60. STAIRWAY EGRESS DOOR SCHEDULING:</b>  |   |                                      |           |
|  | 32" MINIMUM   | SECTION 1010.1.1                     |           |
|  | FBC-B:  | SECTION 1010.1.1                     |           |
|  | NFPA 101:   | SECTION 7.2.1.2.3.2                  |           |
|  | 32" PROVIDED  |                                      |           |
| NOTE: MAXIMUM TRAVEL DISTANCE TAKEN FROM LIFE SAFETY PLAN  |   |                                      |           |
| <b>61. STAIRWAY EGRESS DOOR SCHEDULING:</b>  |   |                                      |           |
|  | 32" MINIMUM   | SECTION 1010.1.1                     |           |
|  | FBC-B:  | SECTION 1010.1.1                     |           |
|  | NFPA 101:   | SECTION 7.2.1.2.3.2                  |           |
|  | 32" PROVIDED  |                                      |           |
| NOTE: MAXIMUM TRAVEL DISTANCE TAKEN FROM LIFE SAFETY PLAN  |   |                                      |           |
| <b>62. STAIRWAY EGRESS DOOR SCHEDULING:</b>  |   |                                      |           |
|  | 32" MINIMUM   | SECTION 1010.1.1                     |           |
|  | FBC-B:  | SECTION 1010.1.1                     |           |
|  | NFPA 101:   | SECTION 7.2.1.2.3.2                  |           |
|  | 32" PROVIDED  |                                      |           |
| NOTE: MAXIMUM TRAVEL DISTANCE TAKEN FROM LIFE SAFETY PLAN  |   |                                      |           |
| <b>63. STAIRWAY EGRESS DOOR SCHEDULING:</b>  |   |                                      |           |
|  | 32" MINIMUM   | SECTION 1010.1.1                     |           |
|  | FBC-B:  | SECTION 1010.1.1                     |           |
|  | NFPA 101:   | SECTION 7.2.1.2.3.2                  |           |
|  | 32" PROVIDED  |                                      |           |
| NOTE: MAXIMUM TRAVEL DISTANCE TAKEN FROM LIFE SAFETY PLAN  |   |                                      |           |
| <b>64. STAIRWAY EGRESS DOOR SCHEDULING:</b>  |   |                                      |           |
|  | 32" MINIMUM   | SECTION 1010.1.1                     |           |
|  | FBC-B:  | SECTION 1010.1.1                     |           |
|  | NFPA 101:   | SECTION 7.2.1.2.3.2                  |           |
|  | 32" PROVIDED  |                                      |           |
| NOTE: MAXIMUM TRAVEL DISTANCE TAKEN FROM LIFE SAFETY PLAN  |   |                                      |           |
| <b>65. STAIRWAY EGRESS DOOR SCHEDULING:</b>  |   |                                      |           |
|  | 32" MINIMUM   | SECTION 1010.1.1                     |           |
|  | FBC-B:  | SECTION 1010.1.1                     |           |
|  | NFPA 101:   | SECTION 7.2.1.2.3.2                  |           |
|  | 32" PROVIDED  |                                      |           |
| NOTE: MAXIMUM TRAVEL DISTANCE TAKEN FROM LIFE SAFETY PLAN  |   |                                      |           |
| <b>66. STAIRWAY EGRESS DOOR SCHEDULING:</b>  |   |                                      |           |
|  | 32" MINIMUM   | SECTION 1010.1.1                     |           |
|  | FBC-B:  | SECTION 1010.1.1                     |           |
|  | NFPA 101:   | SECTION 7.2.1.2.3.2                  |           |
|  | 32" PROVIDED  |                                      |           |
| NOTE: MAXIMUM TRAVEL DISTANCE TAKEN FROM LIFE SAFETY PLAN  |   |                                      |           |
| <b>67. STAIRWAY EGRESS DOOR SCHEDULING:</b>  |   |                                      |           |
|  | 32" MINIMUM   | SECTION 1010.1.1                     |           |
|  | FBC-B:  | SECTION 1010.1.1                     |           |
|  | NFPA 101:   | SECTION 7.2.1.2.3.2                  |           |
|  |   |                                      |           |



S ARCHITECTURE

33 SE 4TH STREET, SUITE 100  
BOCA RATON, FL 33432  
561.835.5515

WWW.SARCHITECTURE.COM  
AA26003746

SEAL:



MATTHEW R. FORGET // REG. FL. NO. AR95364

DIGITAL SIGNATURE:

CLIENT / PROJECT ADDRESS:

**HODGE MARINE**

1857 NW 21ST STREET  
POMPANO BEACH, FLORIDA 33069

REVISIONS:

| NO. | DATE | DESCRIPTION |
|-----|------|-------------|
|-----|------|-------------|

KEY PLAN:

PROJECT NUMBER: 24-057

DATE ISSUED: 2025-06-30

SHEET TITLE:

CODE INFORMATION

SHEET NO.:

**G002**

**DRC**  
**APPROVAL**  
**DATE**  
**DATE**

PZ25-1200034

08/06/2025